



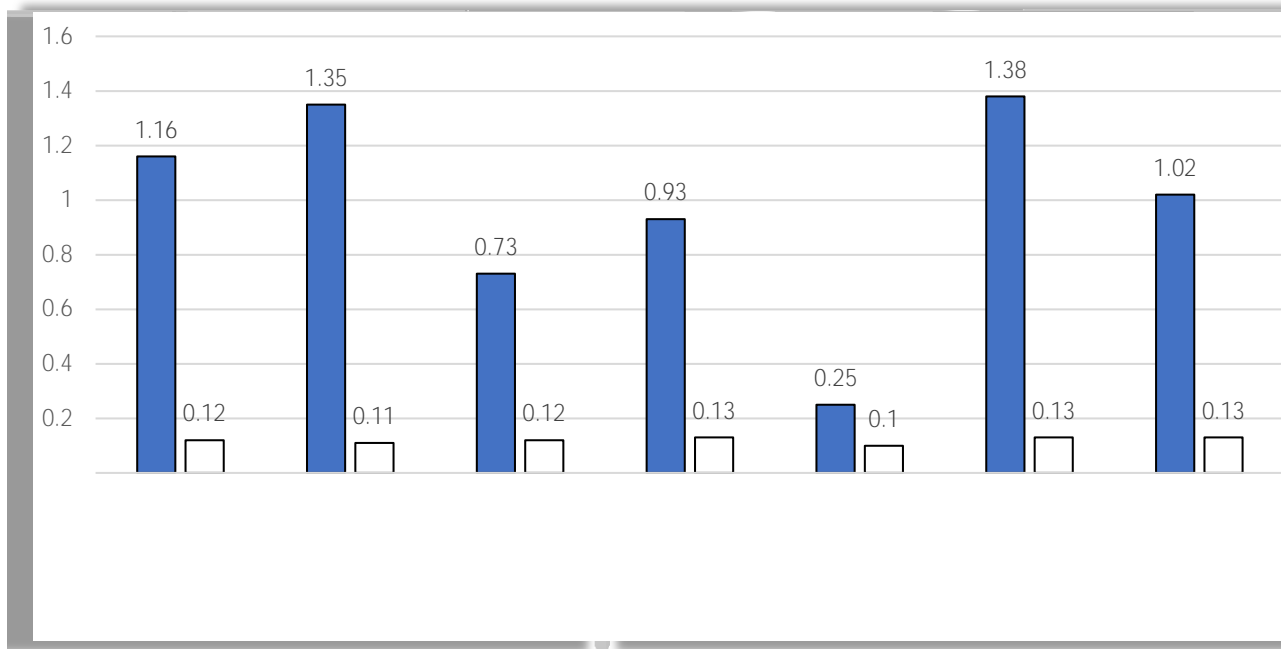




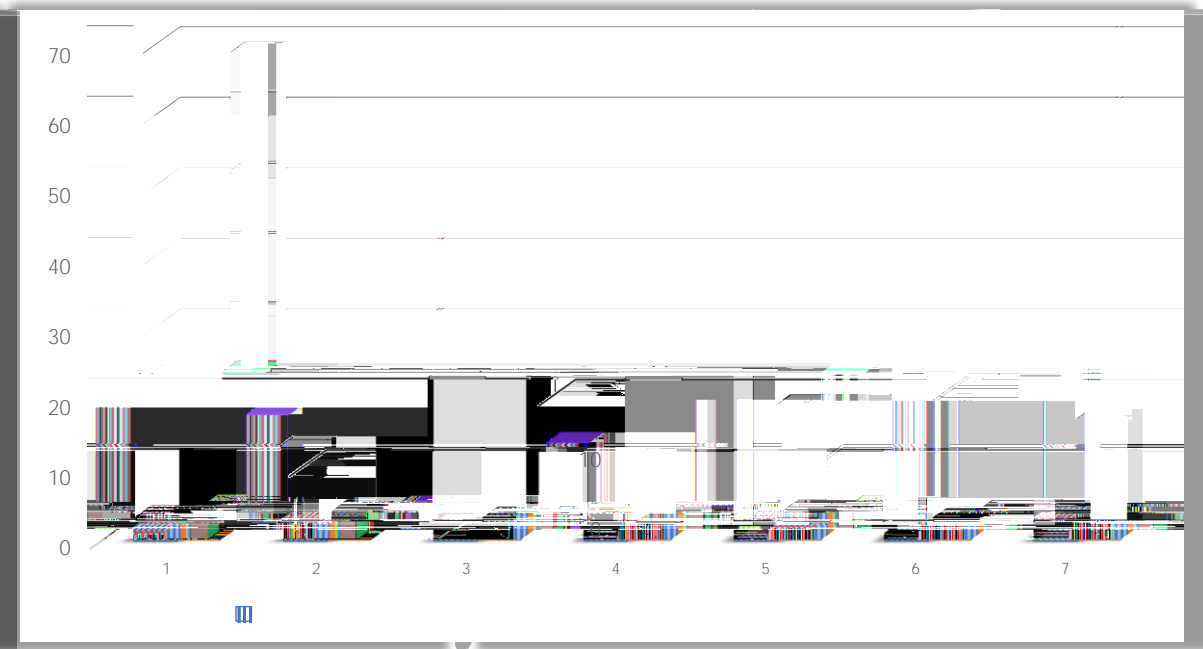
Academic Growth

Sierra School at Wylie
Early Behavioral Intervention Model

Student Growth in Reading (SY21-22)



Student Growth in Math (SY21-22)



Sierra School at Wylie ISD vs National Average
(18 weeks)



Partnering to Support Students In Texas

REGION 10

- 🌱 Wylie ISD | Early Behavioral Intervention-21
- 🌱 R10 @ Wylie | Intensive Behavioral Needs-6)(4
- 🌱 R10 @ Plano | Intensive Behavioral Needs-8)(
- 🌱 R10 @ Plano | Intensive Behavioral Needs-1)(2)
- 🌱 R10 @ Plano | Functional Communication Support-1)(2)

REGION 7

- 🌱 West Sabine ISD | Intensive Behavioral Needs-1)(K
- *Partnership with SRSN/R15; TEA Engagement, Support & Feedback

REGION 4

- 🌱 Angleton ISD | Intensive Behavioral Needs-9)(6

Partnering to Support Students In Texas



