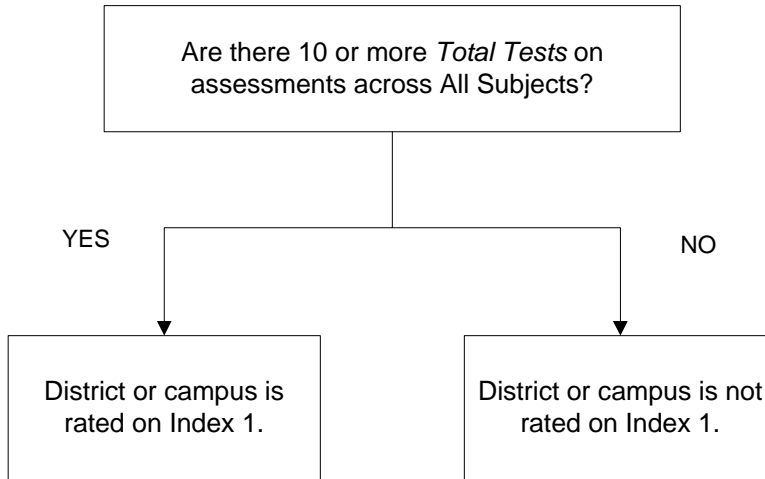


# 2016 Small Numbers Analysis Index 1: Student Achievement

## ALL DISTRICTS AND CAMPUS TYPES

Small numbers analysis is not applied to Index 1. A district or campus with fewer than 10 total tests across all subjects will not be rated for Index 1.



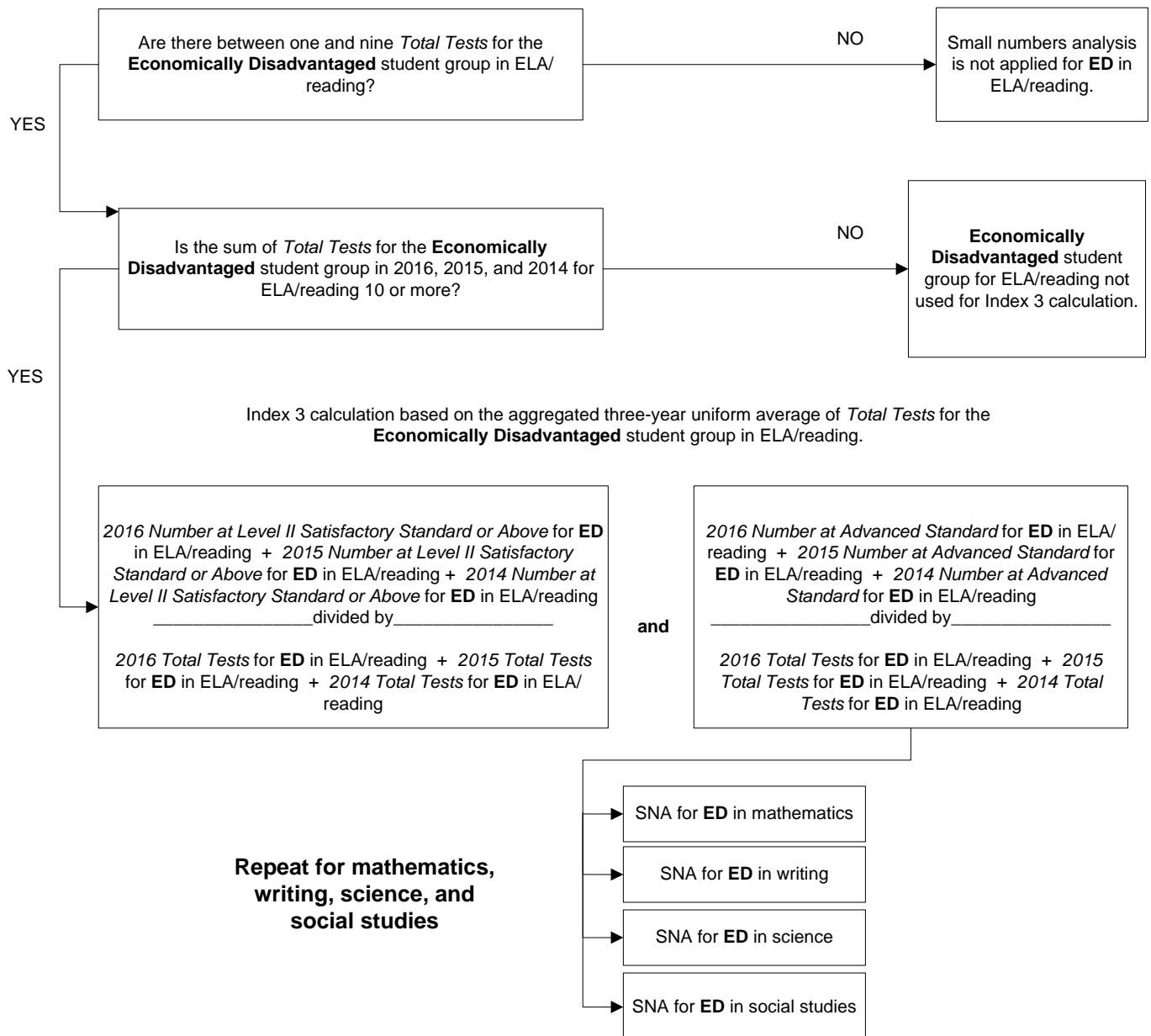


# 2016 Small Numbers Analysis Index 3: Closing Performance Gaps

## ALL DISTRICTS AND CAMPUS TYPES

Small numbers analysis is applied for the **Economically Disadvantaged (ED)** student group by subject (ELA/reading, mathematics, writing, science, and social studies) if there are between one and nine *Total Tests* in 2016. There must be at least one test in order for Index 3 to be evaluated.

### ELA/Reading



# Index 4 Target Determination For Non-AEA (Standard) Districts and Campuses

YES

Index 4 Target = 12

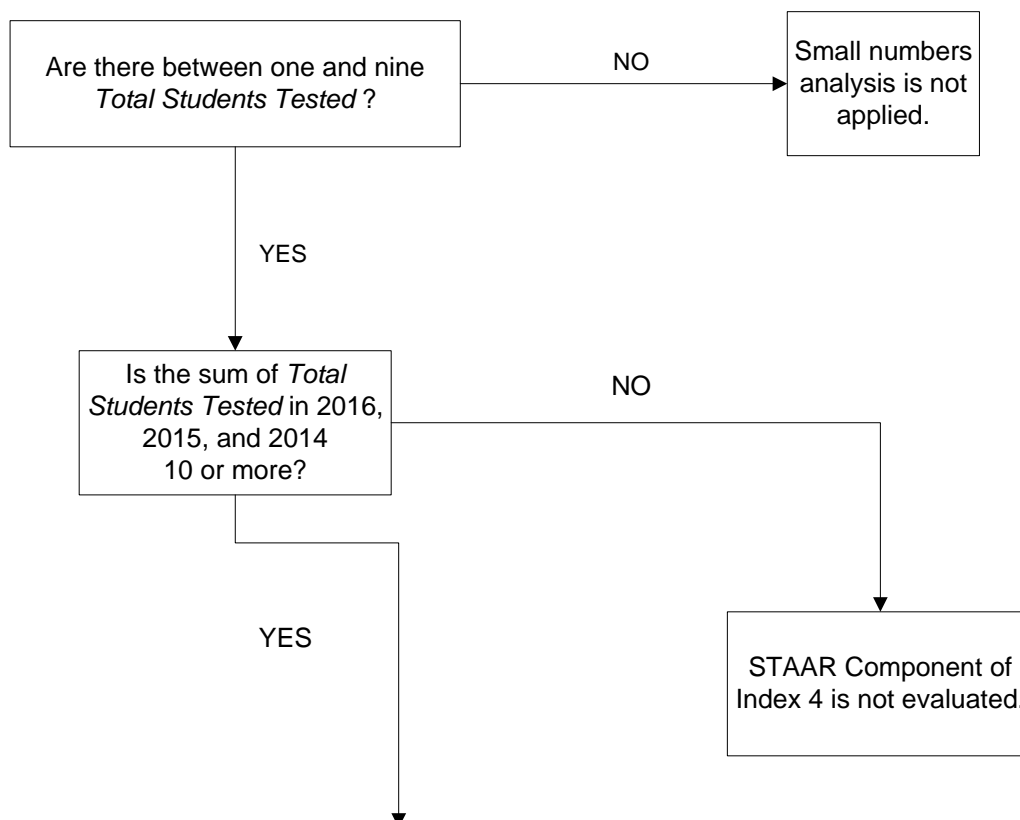
Are there STAAR  
results for 10 or

# 2016 Small Numbers Analysis Index 4: Postsecondary Readiness

## Part One—STAAR Component

### ALL DISTRICTS AND CAMPUS TYPES

Small numbers analysis is applied if the *Total Students Tested* in 2016 is between one and nine. There must be at least one student tested in order for Index 4 STAAR component to be evaluated.



Index 4 STAAR Component calculation based on the aggregated  
three-year uniform average

*2016 Number of students meeting Postsecondary Readiness Standard in two or more subject areas (or one subject area if only one subject was tested) + 2015 Number of students meeting Postsecondary Readiness Standard in two or more subject areas (or one subject area if only one subject was tested) + 2014 Number of students meeting Postsecondary Readiness Standard in two or more subject areas (or one subject area if only one subject was tested)*

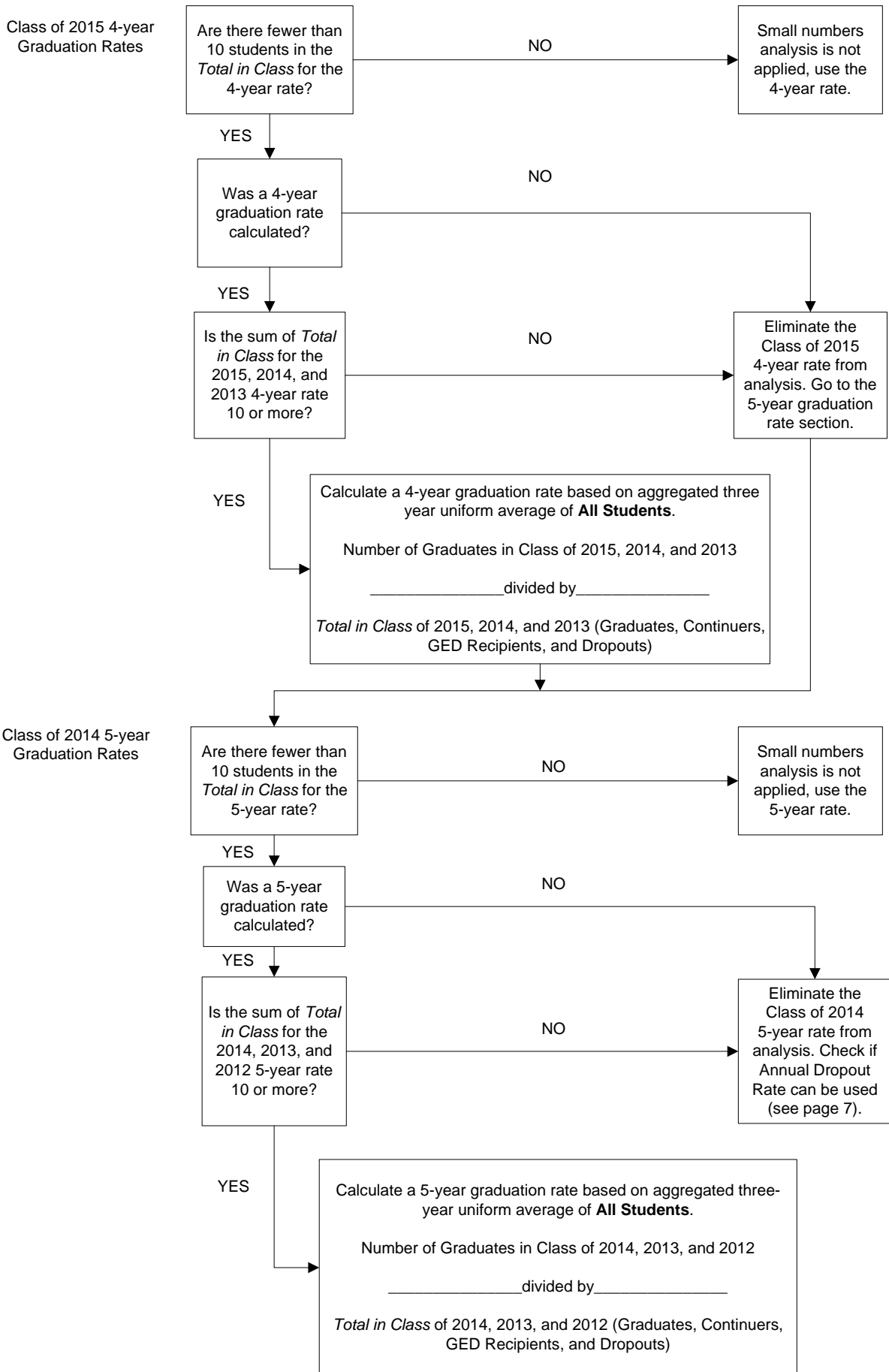
\_\_\_\_\_ divided by \_\_\_\_\_

*2016 Total number of students with test results in two or more subject areas (or one subject area if only one subject was tested) + 2015 Total number of students with test results in two or more subject areas (or one subject area if only one subject was tested) + 2014 Total number of students with test results in two or more subject areas (or one subject area if only one subject was tested)*

# 2016 Small Numbers Analysis Index 4: Postsecondary Readiness

## Part Two—Graduation Rate Component STANDARD DISTRICTS AND CAMPUSES

**Graduation Rate:** Small numbers analysis is applied to the **All Students** student group if the *Total in Class* for the 4-year (Class of 2015) or 5-year (Class of 2014) is fewer than 10 students.



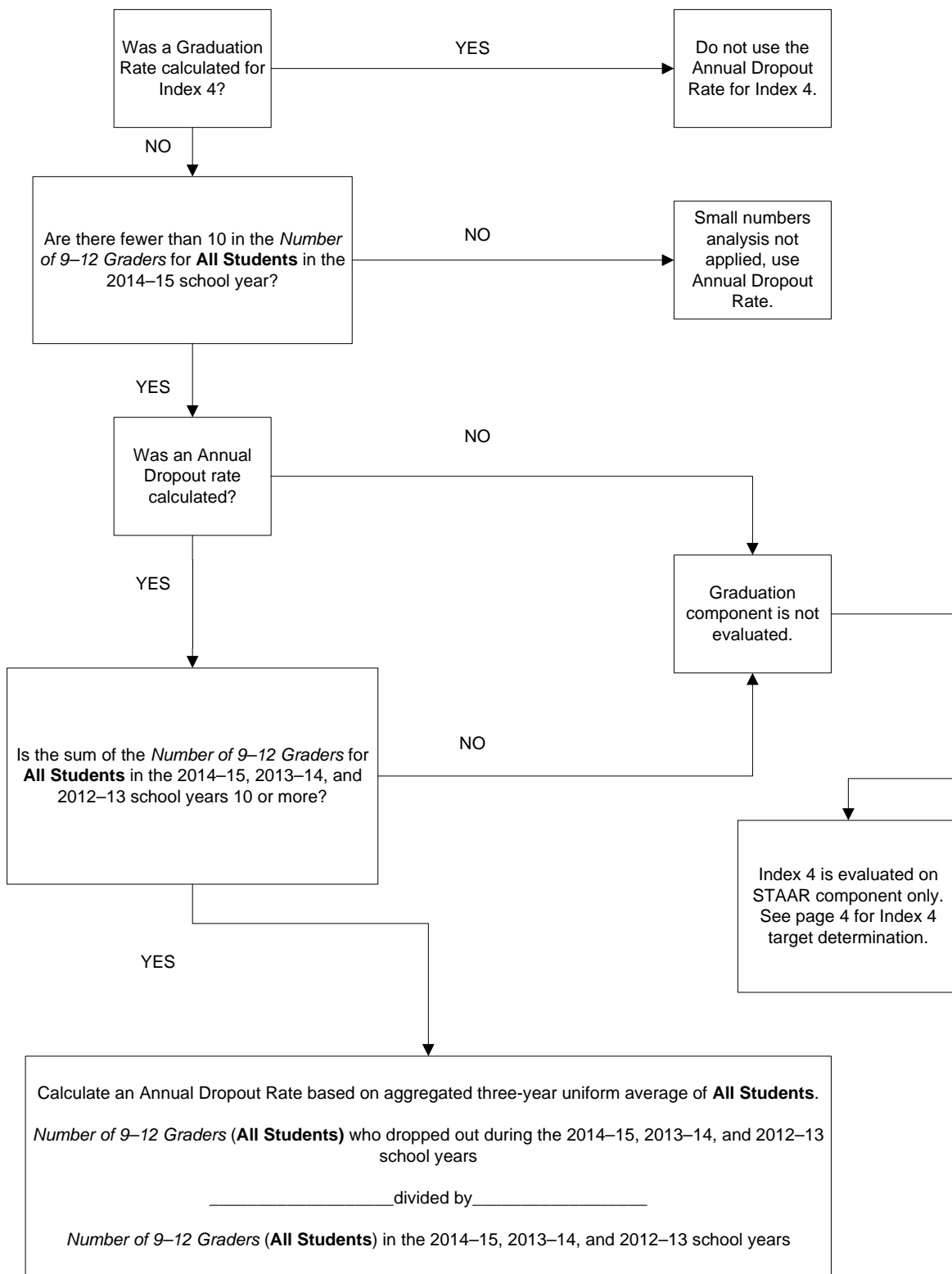
# 2016 Small Numbers Analysis

## Index 4: Postsecondary Readiness

### Part Two—Graduation Rate Component (Annual Dropouts)

#### ALL DISTRICTS AND CAMPUS TYPES

**Annual Dropout Rate (Gr 9–12):** Small numbers analysis is applied to the **All Students** student group if the *Number of 9–12 Graders* in the 2014–15 school year is fewer than 10 and **if no Graduation Rate is calculated.**



**2016 Small Numbers Analysis**  
**Index 4: Postsecondary Readiness**  
**Part Three—Graduation Plan Component**



**2016 Small Numbers Analysis**  
**Index 4: Postsecondary Readiness**  
**Part Three—Graduation Plan Component**

**STANDARD DISTRICTS AND CAMPUS TYPES**

**Recommended High School Program/Distinguished Achievement Program/Foundation High School Plan with Endorsements/Foundation High School Plan – Distinguished Level of Achievement (RHSP/DAP/FHSP-E/**



**2016 Small Numbers Analysis**  
**Index 4: Postsecondary Readiness**  
Part Three—Graduation Plan Component

**STANDARD DISTRICTS AND CAMPUS TYPES**

**2016 Small Numbers Analysis**  
**Index 4: Postsecondary Component**  
**Part Four—College and Career Readiness**  
**STANDARD DISTRICTS AND CAMPUS TYPES**

Two-year averages for the Postsecondary Component of Index 4 cannot be calculated due to a change in methodology beginning in 2016.

# Index 4 Target Determination For AEA Districts and Campuses

Are **both** the STAAR component and Graduation Rate/

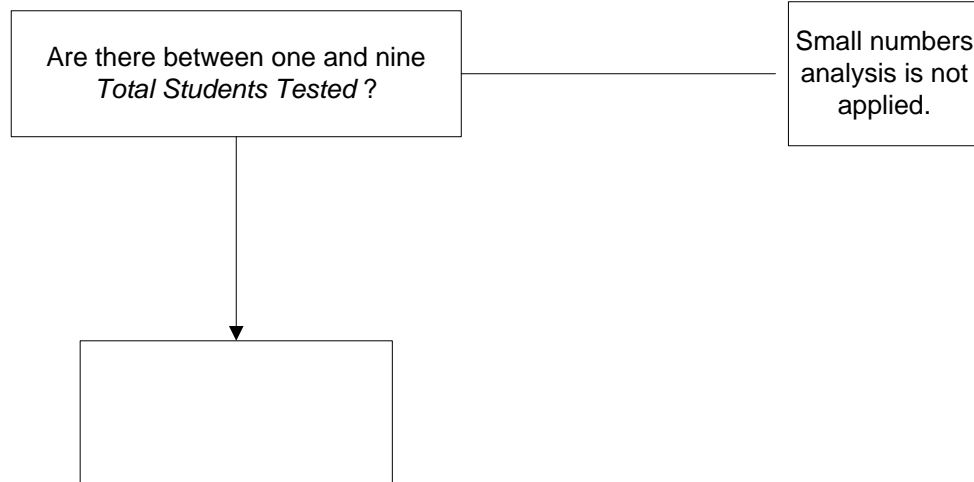
# 2016 Small Numbers Analysis

## Index 4: Postsecondary Readiness

### Part One—STAAR Component

#### AEA DISTRICTS AND CAMPUSES

Small numbers analysis is applied if the *Total Students Tested* in 2016 is between one and nine. There must be at least one student tested in order for Index 4 STAAR component to be evaluated.



# 2016 Small Numbers Analysis Index 4: Postsecondary Readiness

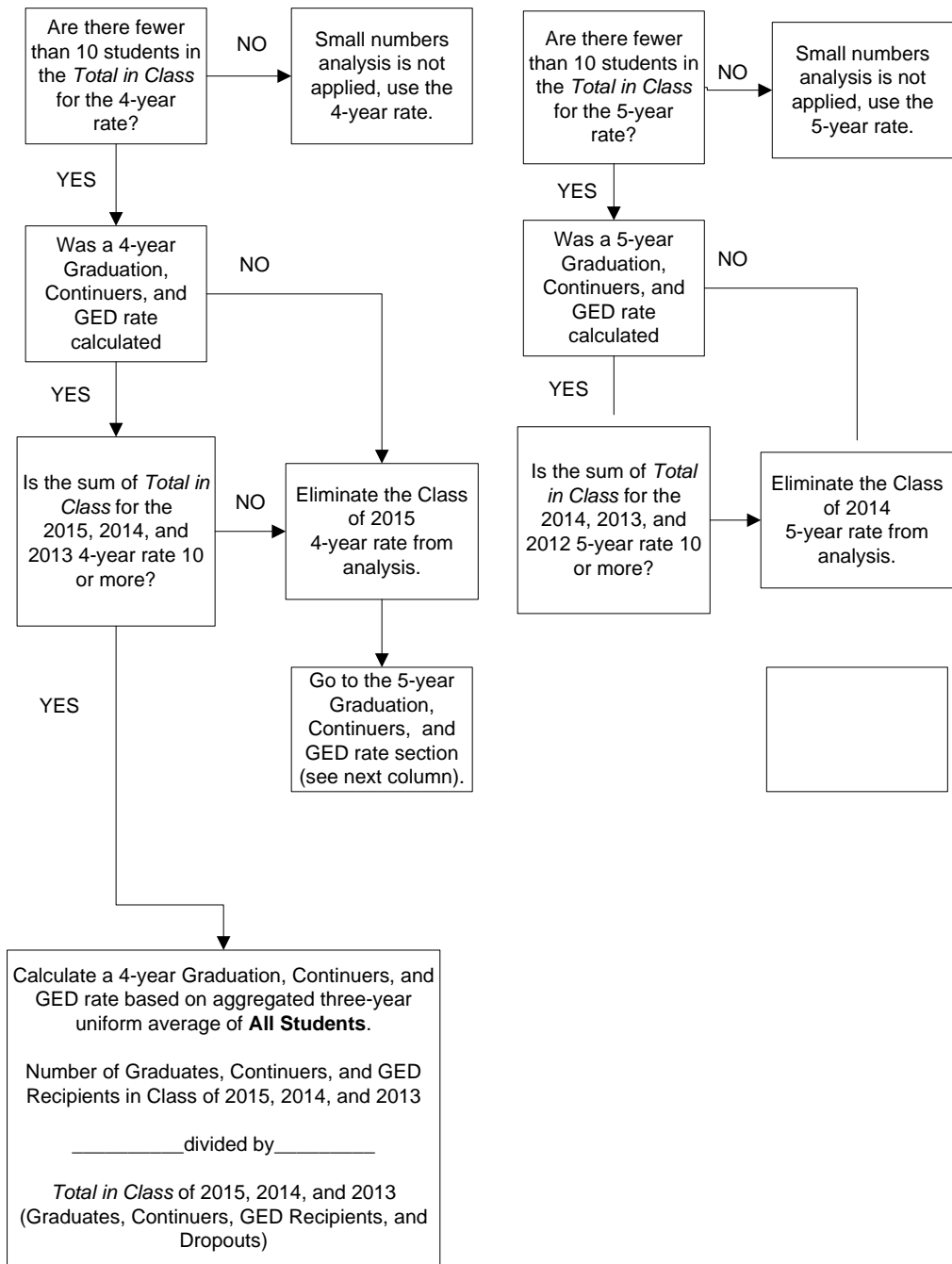
## Part Two—Graduation Rate Component

### AEA DISTRICTS AND CAMPUSES

**Graduation, Continuers, and GED Rate:** Small numbers analysis is applied to the **All Students** student group if the *Total in Class* for the 4-year (Class of 2015), 5-year (Class of 2014), or 6-year (Class of 2013) is fewer than 10 students. AEA campuses use Graduation, Continuers, and GED rates for Index 4.

#### Class of 2015 4-Year Graduation, Continuers, and GED Rate

#### Class of 2014 5-Year Graduation, Continuers, and GED Rate







**2016 Small Numbers Analysis**  
**Index 4: Postsecondary Readiness**

**Bonus Points—Recommended High School Program/Distinguished Achievement Program (RHSP/DAP)  
Longitudinal Rates (Without Foundation High School Plan Graduates)**

**AEA DISTRICTS AND CAMPUSES**

**2016 Small Numbers Analysis**  
**Index 4: Postsecondary Readiness**

**Bonus Points—Recommended High School Program/Distinguished Achievement Program (RHSP/DAP)/  
Foundation High School Plan—Endorsement/Foundation High School Plan-Distinguished Level of  
Achievement (DLA) Longitudinal Rates**

**AEA DISTRICTS AND CAMPUSES**

Two-year averages for the longitudinal RHSP/DAP/FHSP-E/FHSP-DLA rate of Index 4 Bonus

**2016 Small Numbers Analysis**  
**Index 4: Postsecondary Readiness**

**Bonus Points—Recommended High School Program/Distinguished Achievement Program (RHSP/DAP) Annual Rates**  
**(Without Foundation High School Plan Graduates)**

**AEA DISTRICTS AND CAMPUSES**

Small numbers analysis is applied to the **All Students** student group if the *Number of Total Graduates* in the 2014–15 school year is fewer than 10.

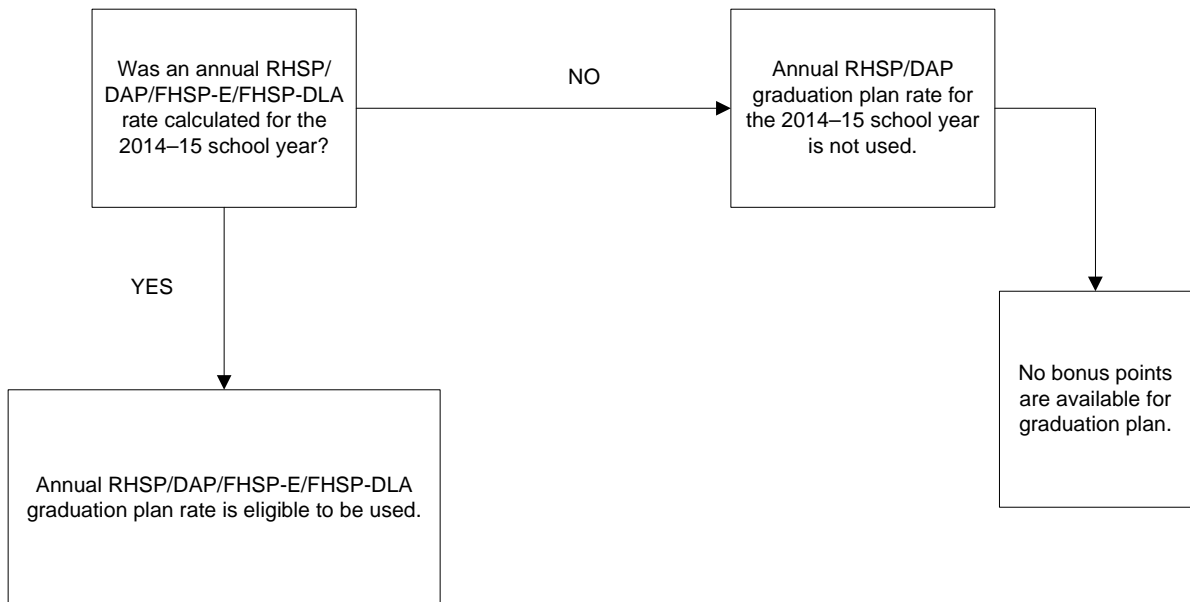
# 2016 Small Numbers Analysis

## Index 4: Postsecondary Readiness

Bonus Points—Recommended High School Program/Distinguished Achievement Program (RHSP/DAP)/  
Foundation High School Plan—Endorsement/Foundation High School Plan-Distinguished Level of  
Achievement (DLA) Annual Rates

### AEA DISTRICTS AND CAMPUSES

Two-year averages for the annual RHSP/DAP/FHSP-E/FHSP-DLA rate of Index 4 Bonus  
Points cannot be calculated because only one year of data is available in 2016.



**2016 Small Numbers Analysis**  
**Index 4: Postsecondary Component**  
**Bonus Points—College and Career Readiness**  
**AEA DISTRICTS AND CAMPUSES**



**2016 Small Numbers Analysis  
Index 4: Postsecondary Readiness**

**Bonus Points—Excluded Students**

**AEA DISTRICTS AND CAMPUSES**

Small numbers analysis is not applied to Excluded Students bonus points for Index 4.