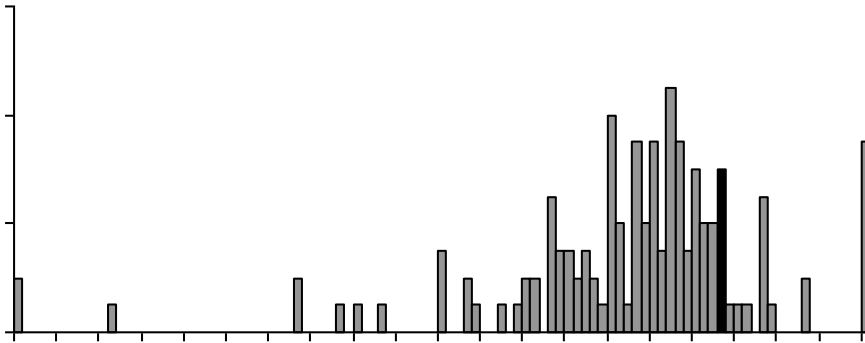


# Accountability System for Educator Preparation (ASEP)

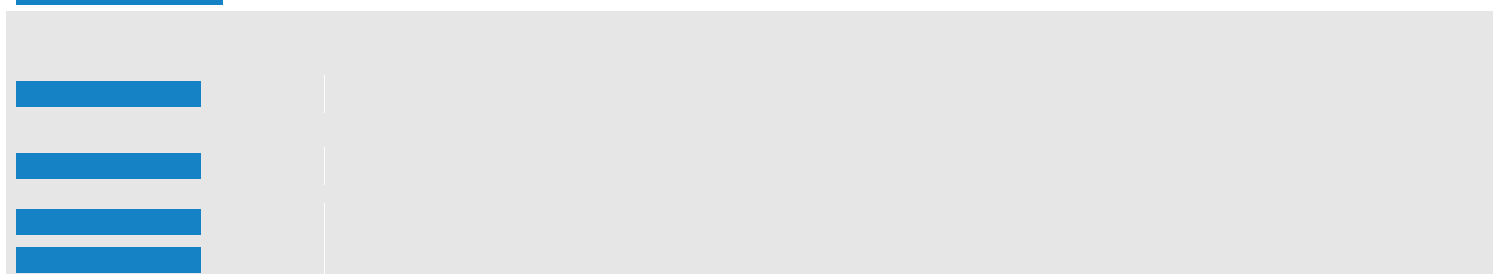
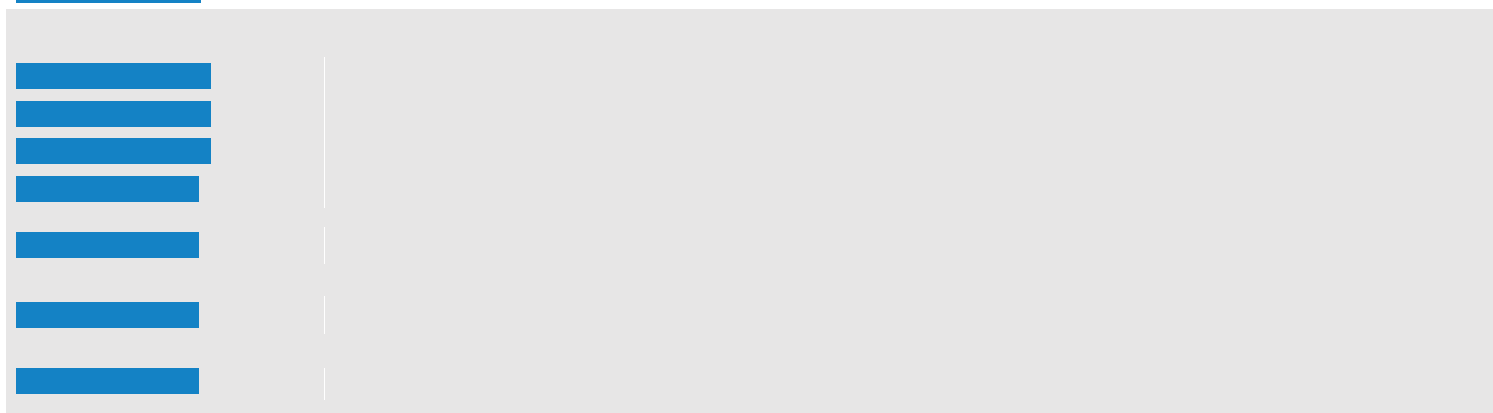
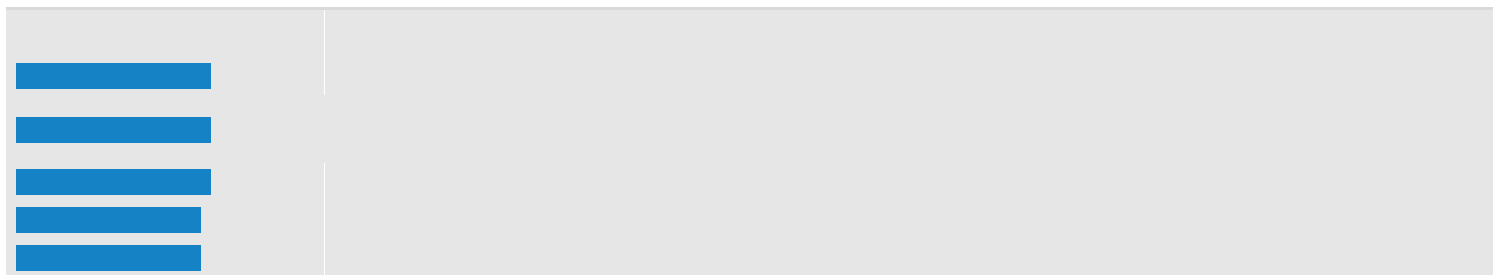


*Traditional*

*All TX EPPs*

# 2016-17 Percentage of Teachers Rated Sufficiently or Well Prepared

ST EDWARD'S UNIVERSITY (N=18)



Percentage of First Year Teachers Appraised as Sufficiently or Well Prepared from 2015 - 2017  
ST EDWARD'S UNIVERSITY

2014-15 (N = 27)      2015-16 (N = 17)      2016-17 (N = 18)

