



2023 Accountability Underlying Data Statewide Summary

November 16, 2023

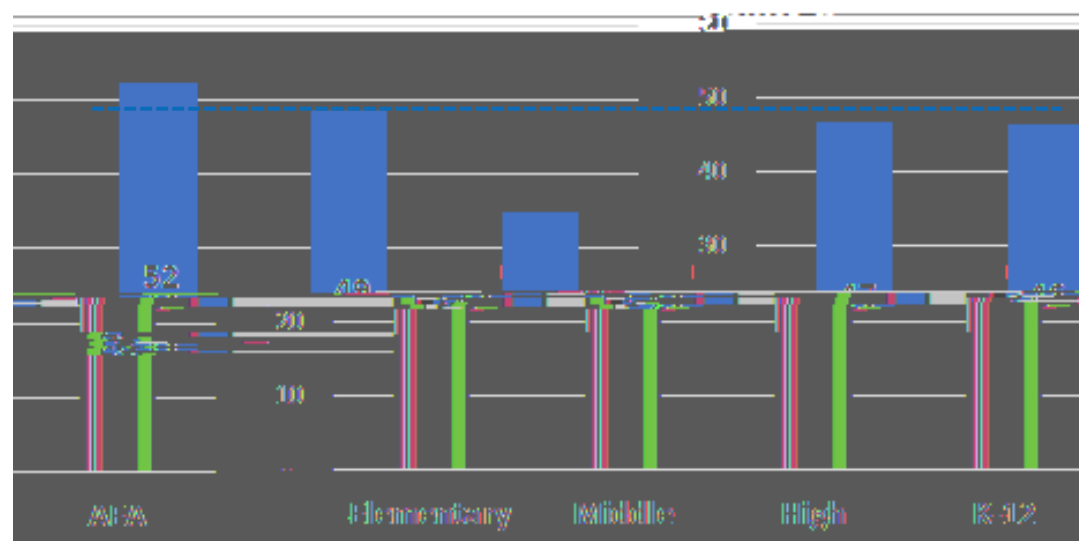
These data do not include ~~test~~ ratings or scale scores (i.e., information about cut scores). They only include raw scores of the underlying indicators from students in the accountability subset.

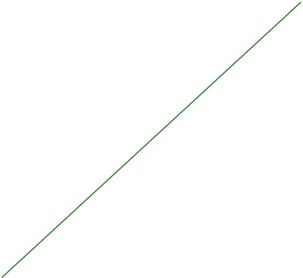
2023 Accountability Data Timeline

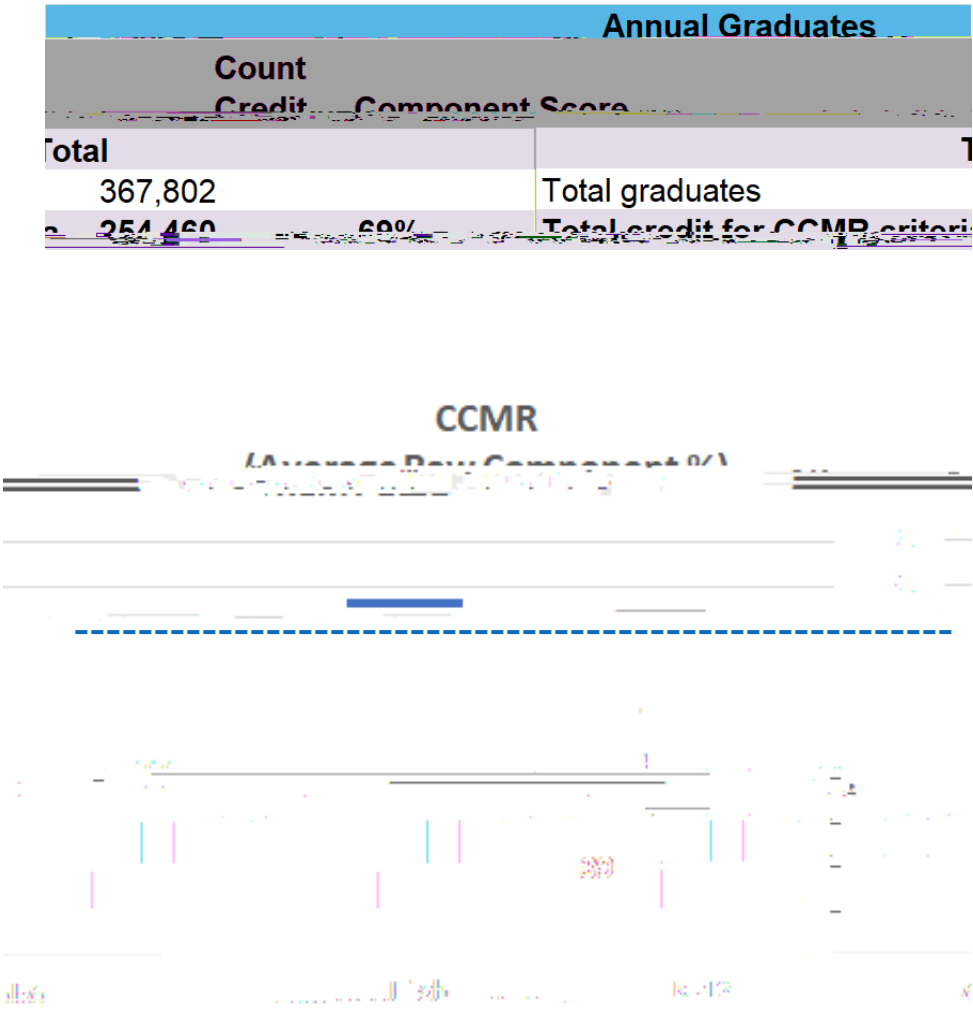


STAAR Proficiency

Average Raw Component %



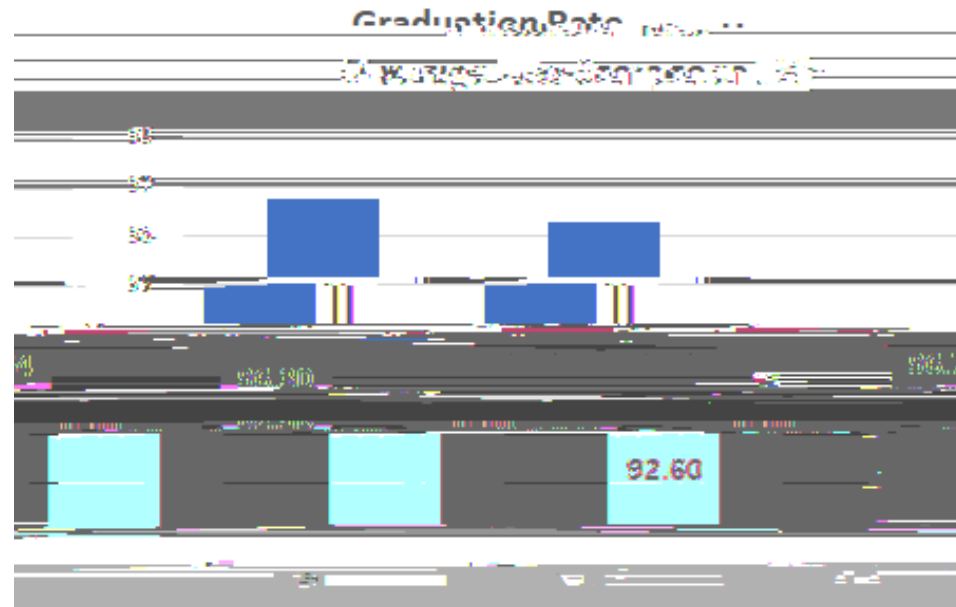




Industry-Based Certifications (IBC)		
Earned an IBC	27%	Earned an IBC
Earned at least one sunseting IBC and did not meet any other CCMR criteria	5%	Earned at least one sunseting IBC and did not meet any other CCMR criteria
Earned a level I or level II certificate in any workforce	1%	Earned a level I or level II certificate in any workforce
Earned a Workforce Readiness Graduate with Completed IEP and Received production turn-out of 04, 05, 54, or 55		Earned a Workforce Readiness Graduate with Completed IEP and Received production turn-out of 04, 05, 54, or 55
Military		
Enlisted in the U.S. Armed Forces	N/A	Enlisted in the U.S. Armed Forces

These data do not include AFJTC/2Tfe5ti>Tf S (e).s Tores (i.e.,>t5ti>Tf inftaboA

State Graduation Rate	
4-Year Graduation Rate (Gr 9-12): Class of 2022	
% Graduated	89.70%
5-Year Graduation Rate (Gr 9-12): Class of 2022	
% Graduated	92.60%



These data do not include A ratings or scale scores (i.e., information about cut scores). They only include raw scores of the underlying indicators from students in the accountability subset.